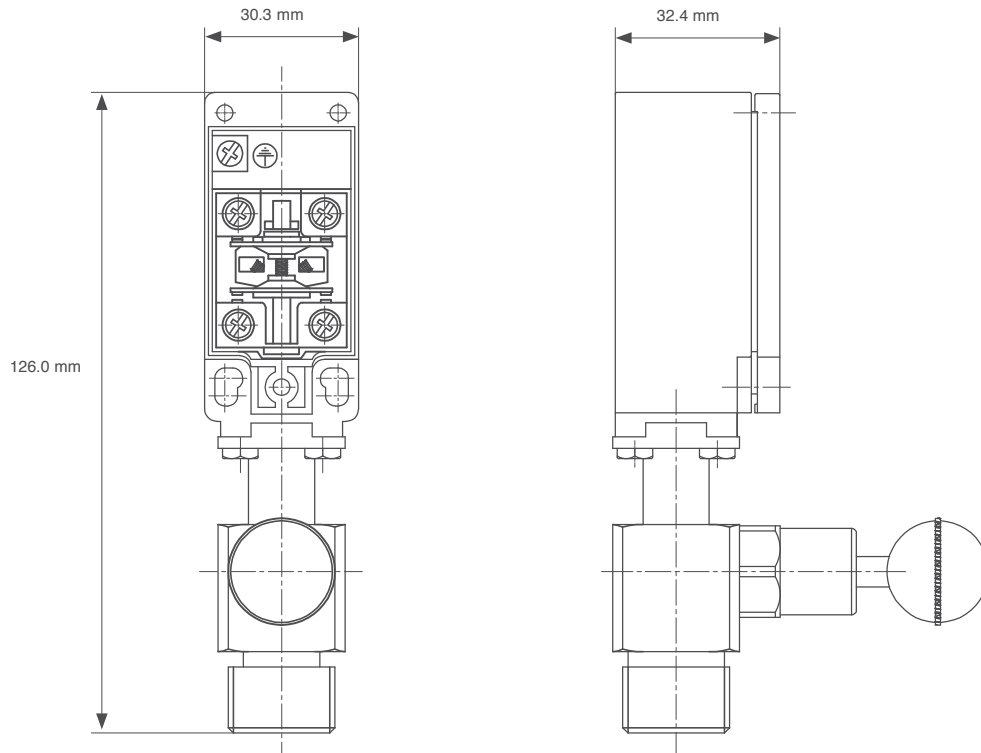


DISCHARGE PRESSURE SWITCH

(Part number 30330010)

The pressure switch mounts in the distribution pipework and may provide an electrical indication of the release of agent, or may perform ventilation shut-downs or other interlock functions. The pressure switch requires manual resetting following operation.

The discharge pressure switch requires a minimum pressure of 10 bar to ensure correct operation. The switch contains normally open and normally closed contacts.



**FIGURE 3-18
 DISCHARGE PRESSURE SWITCH**
 025305

Technical information

Locking system:	Brass
Electrical box system:	Duraluminium
Connection:	1/2 in. BSPT
Set point:	10 bar rising at 20 °C (with manual reset)
Working temperature range:	-25 °C to 80 °C -20 °C to 50 °C (EN 12094-10)
Maximum working pressure:	370 bar
Weight:	0.41 kg
Maximum current:	6 A
Maximum voltage:	250 VDC 500 VAC
Ingress protection class:	IP65
Conformity:	UL-580
Approvals and listings:	LPCB, VdS, A2P
Marking:	Manufacturer, part number, serial number, working pressure
Method of marking	Engraving
Overall size:	126 mm × 30.3 mm × 32.4 mm

Location on system

The discharge pressure switch connects to either the manifold or the discharge pipework.

Operating instructions

The discharge pressure switch works within the pre-determined system operating conditions. The switch requires manual resetting following operation.

Maintenance instructions

To reset after activation, pull and release the knob on the side of the unit.