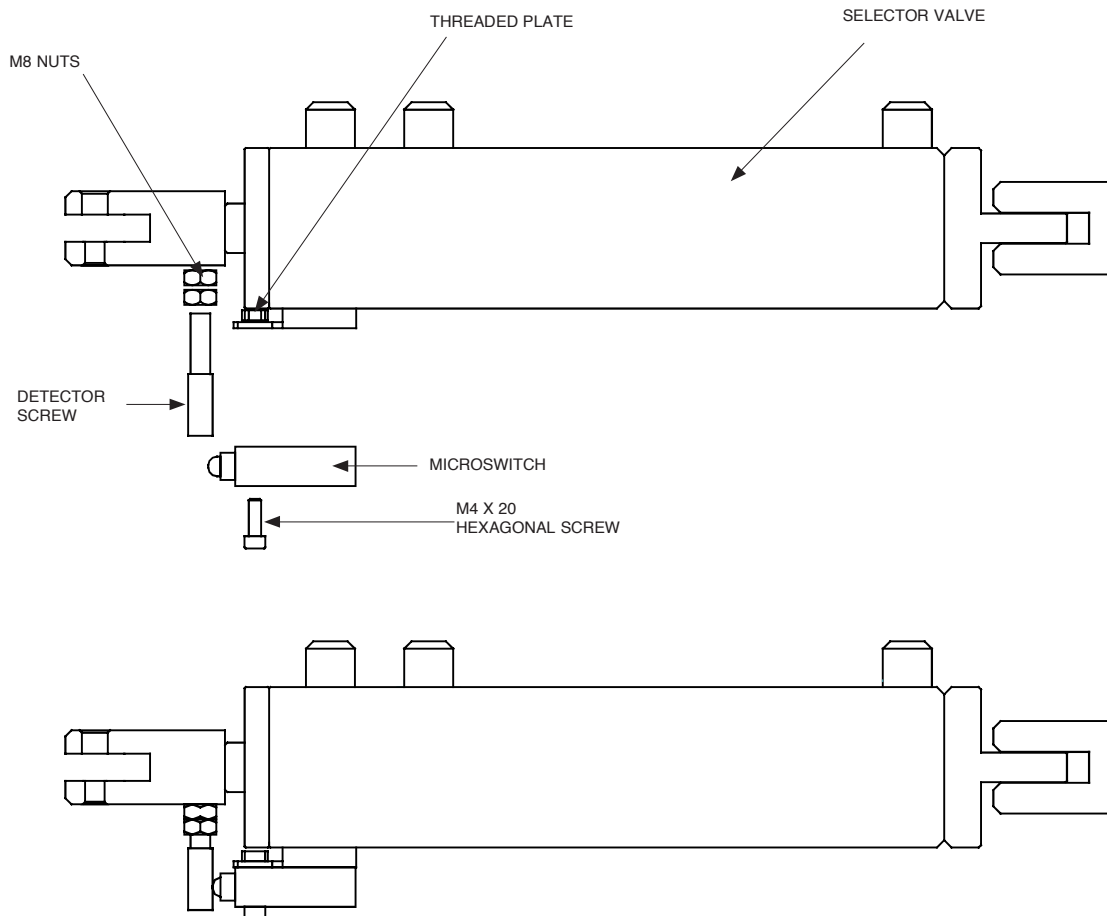


INSTALLING THE SELECTOR VALVE MICROSWITCH

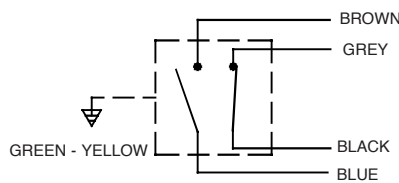
A selector valve microswitch (Part number 30116011) is available. When fitted, it electronically signals that the selector valve has operated.

To assemble the microswitch, complete the following steps:

1. Attach the microswitch to the threaded plate using the M4 x 20 hexagonal screw. See Figure 4-11.
2. Mount the detector screw using the two M8 nuts provided.
3. Wire the microswitch according to Figure 4-12.



**FIGURE 4-11
MICROSWITCH INSTALLATION**
025671



**FIGURE 4-12
MICROSWITCH ELECTRICAL CONNECTION**
025672