

iFLOW MATRIX BRACKETS

The iFLOW matrix brackets are used with 80 L containers only and are designed to securely fix containers to a wall or supporting structure. The containers are to be floor mounted only. Table 3-9 details the components used. Order the manifold brackets and u-bolts separately.

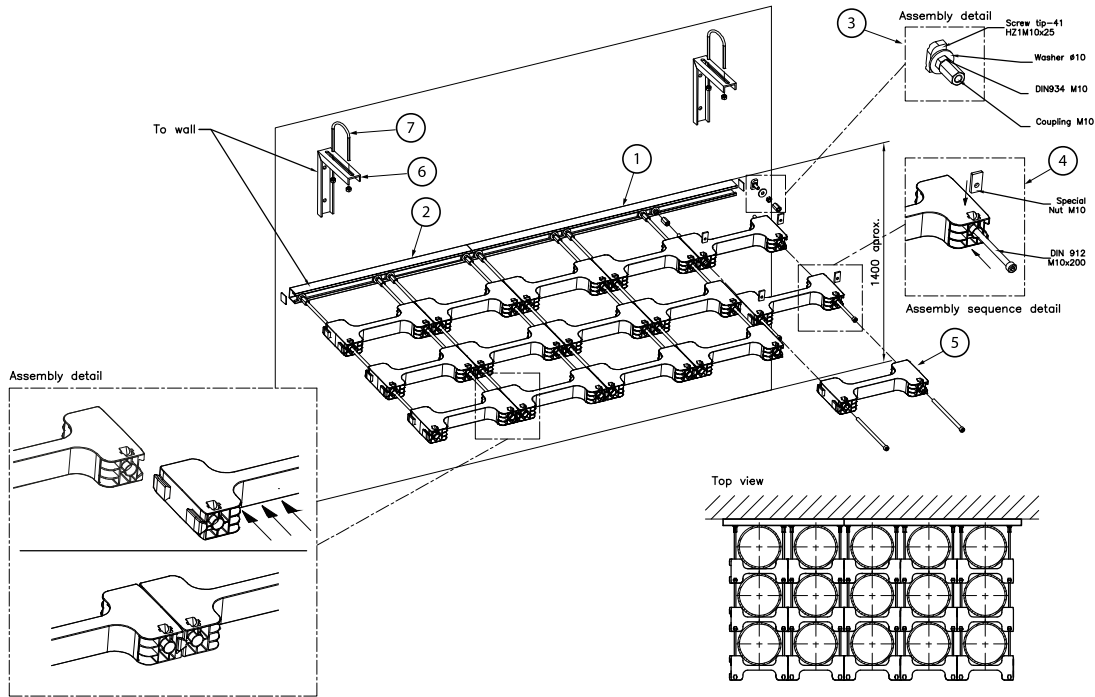


FIGURE 3-29
iFLOW MATRIX BRACKETS
 025313

TABLE 3-9: MATRIX BRACKET DETAILS

Item number	Part number	Description	Quantity required
1	36116200	Wall mount bracket (three containers)	As required *
	36116274	Wall mount bracket (two containers)	As required *
Not shown	14267	Wall mount bracket (one container)	One
3	36116291	Support screw assembly (set of two)	One for each back row (wall mounted) container
4	36116292	Bolt assembly (set of two)	One for each container
5	36116293	iFLOW bracket	One for each container
6	30640006	Single / double row manifold support (80 L containers)	Two for one to six port manifolds Three for seven to twelve port manifolds (Maximum 2.2 m between manifold supports)
7	30600050	Manifold u-bolt (3/4 in.)	Same as single / double row manifold support
	30600060	Manifold u-bolt (1 in.)	Same as single / double row manifold support
	30600070	Manifold u-bolt (1 1/4 in.)	Same as single / double row manifold support
	30600080	Manifold u-bolt (1 1/2 in.)	Same as single / double row manifold support
	30600090	Manifold u-bolt (2 in.)	Same as single / double row manifold support
	30600100	Manifold u-bolt (2 1/2 in.)	Same as single / double row manifold support
	30600110	Manifold u-bolt (3 in.)	Same as single / double row manifold support
	30600120	Manifold u-bolt (4 in.)	Same as single / double row manifold support

* Combinations of two and three container wall mount brackets create different container bank configurations. In Figure 3-29, for five wall mounted containers, combine a two container (Part number 36116274) and a three container (Part number 36116200) wall mount bracket. The single container bracket (Part number 14267) cannot be used to create other container bank configurations.