

INFORMATION SHEET

DESCRIPTION

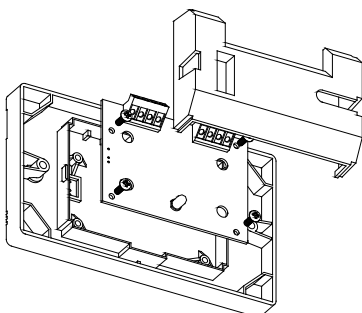
The CIM800 Addressable Contact Input Module supervises two circuits of voltage-free contacts such as outputs from extinguishing systems, ventilation controls, fire door controls, sprinkler flow switches, non indicating detectors, etc. The LED illuminates when any input goes into alarm, and can also be programmed to blink when polled by the Tyco *MX* Control and Indicating Equipment (c.i.e.). The CIM800 can be configured to supervise:

- Two circuits of multiple normally-open contacts; with short circuit alarm.
- Two circuits of multiple normally-closed contacts; open circuit alarm.
- Two circuits with a single normally-open contact closing for alarm; with short circuit fault. This requires a resistor in series with the alarm contact and special programming at the MX4428 c.i.e.

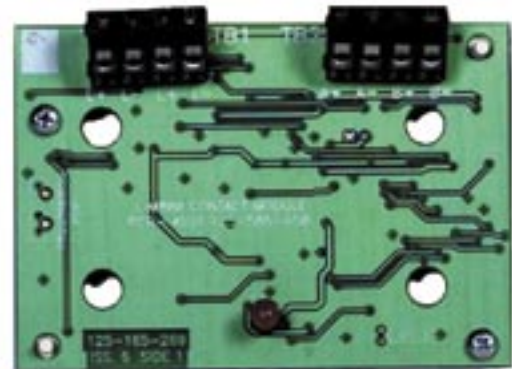
On the MX4428, the two circuits are presented as a single addressable point; either circuit in alarm puts the point into alarm, any circuit in fault puts the point into fault.

MOUNTING

The CIM800 is supplied as an open circuit board (PCB) with mounting hardware and End of Line (EOL) resistors. It must be fitted in a suitable enclosure. It may be mounted on a gear plate using plastic standoffs, to an M520 Ancillary Cover and K2 142 back box, or into the D800 Ancillary Housing. The K2 142 mounting box provides a convenient surface mounting enclosure and the M520 Cover is designed to accommodate the CIM800. The contacts supervised must be voltage free. Do not connect the two circuits of a CIM800 together or join with other *MX* module inputs. Unused inputs must be terminated with an EOL resistor.



M520 Ancillary Cover,
CIM800 PCB and cover



SPECIFICATIONS

Loop Voltage ¹	20V to 40Vdc
Quiescent Current	275µA
Alarm State Current	2.8mA
Circuit Resistance	10 Ohm
EOL Resistor	200 Ohm
Alarm Resistance (s/c fault)	100 Ohm
Max. CIM800 per Loop ²	200/250
Ambient Temperature	-25°C to +70°C
Storage Temperature	-40°C to +80°C
Relative Humidity	10% to 95% (non cond.)

Indoor Applications Only

Dimensions (HWD)	61 x 84 x 25 mm
Wire Size (maximum)	2.5sq. mm

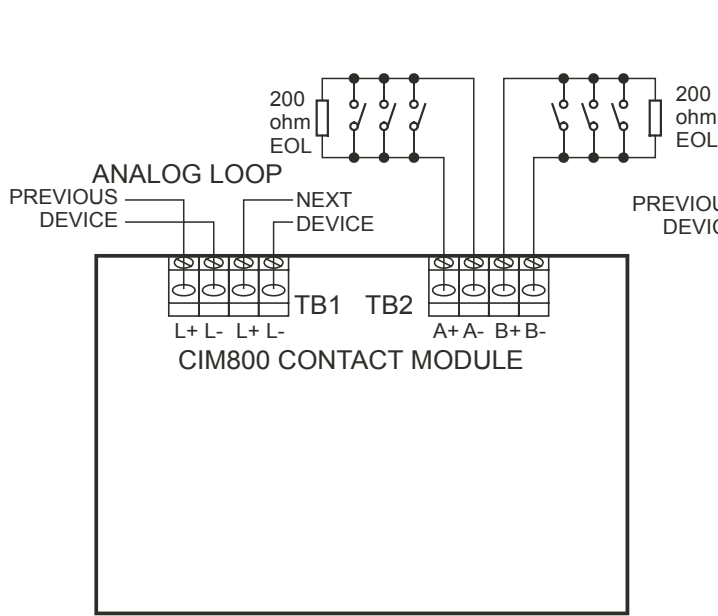
Part Numbers

CIM800	CIM800 PCB ³
M520	Ancillary Cover
K2 142	Back box
557.201.401	D800 Ancillary Housing

1. Addressable loop voltage provided by *MX* c.i.e.
 2. MX4428/*MX* 7, 4100MXP. Refer to appropriate manual: LT0273 (MXP), LT03 13 (4100MXP), LT0360 (*MX* 7-NZ), LT0441 (*MX* 7-Au) for design specifications.
 3. PCB c/w EOL resistor, mounting screws, cover labels.

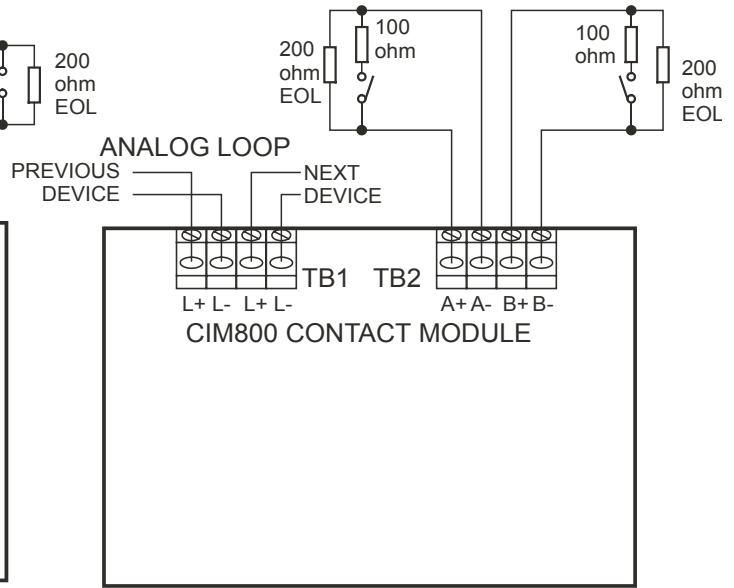
WIRING

CIM800 wiring options.

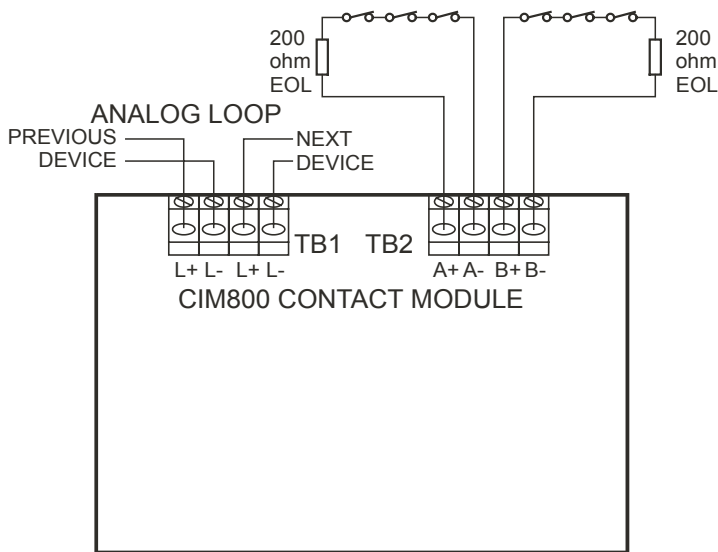


Normally Open

MX4428 Requires Param_2 = 176



Normally Open, S/C = Fault



Normally Closed

Unused inputs (A or B) must be terminated with a 200 ohm EOL resistor.

A and B inputs must be voltage free.

ADDRESS SETTING

The CIM800 is shipped with a default (invalid) address of 255 and must be set to the correct loop address using the 801AP MX Service Tool.



www.tycosafetyproducts-anz.com

Tyco Safety Products, a division of Tyco Australia Pty Limited A.B.N. 80 008 399 004, reserve the right to alter specifications without notice, in line with Tyco's policy of continuing product improvement.